

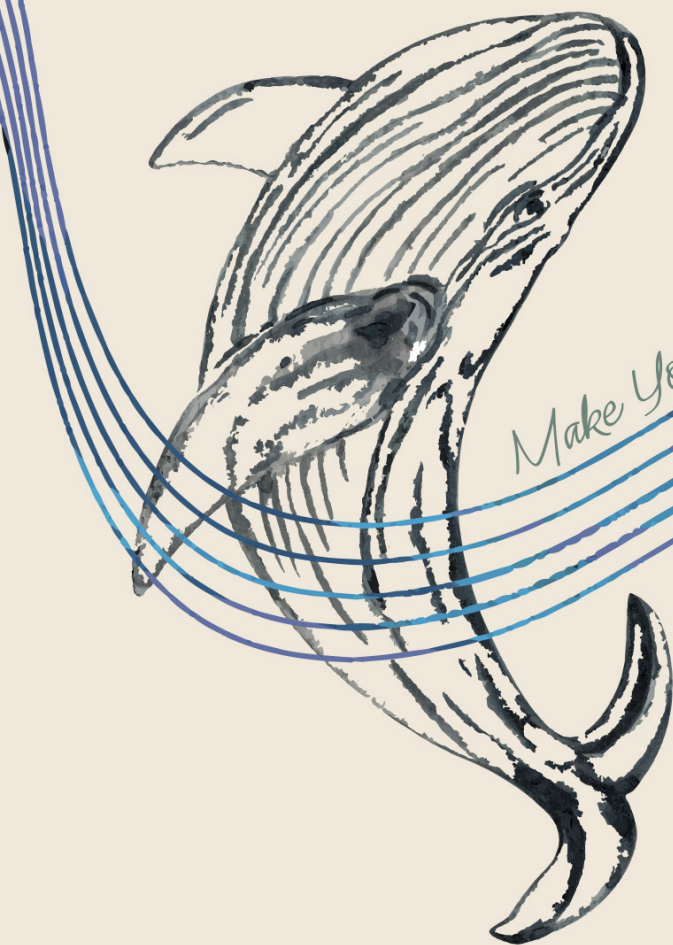


香港教育大學

The Education University
of Hong Kong

Co-terminal Double Degree Programme

Bachelor of Arts (Honours) in Creative Arts and Culture and
Bachelor of Education (Honours) (Visual Arts)
(Five-year Full-time)



Make Your Choice



Co-terminal Double Degree Programme

Bachelor of Arts (Honours) in Creative Arts and Culture and
Bachelor of Education (Honours) (Music)
(Five-year Full-time)



FACULTY OF LIBERAL ARTS AND SOCIAL SCIENCES

博文及社會科學學院

Bachelor of Arts (Honours) in Creative Arts and Culture and Bachelor of Education (Honours) (Music)/(Visual Arts) (Five-year Full-time) (Co-terminal Double Degree)

EdUHK is one of the teacher education providers in Hong Kong. Graduates of the University's teacher education programmes are eligible to become fully qualified and registered teachers. As regards teacher registration, graduates should approach the Teacher Registration Team of the Education Bureau (EDB) to submit applications directly. All applications will be assessed by the EDB.

The 5-year Full-time Co-terminal Double Degree programmes aims to prepare professional Music/Visual Arts teachers and community-based artists. The programme is not only devoted to preparing qualified, competent, professional primary/secondary school teachers capable of satisfying the educational needs of learners with different abilities in a community, but also committed to nurturing community arts and cultural workers who values multiple aspects of intelligence. Graduates of the programme will have attained academic excellence and professional competence, and will possess a solid command of subject knowledge and skills in their chosen disciplines together with a firm and thorough grasp of the interrelationship between theory and practice. They will be creative, responsible, and caring individuals who have an understanding of the arts, culture, community and society, and have a commitment to moral values and lifelong learning.

PROGRAMME AIMS

- To prepare professional Music/Visual Arts teachers and community-based artists who can demonstrate a solid foundation in Music/Visual Arts skills, related academic competencies and teaching practices to meet their future teaching needs; and
- To enable graduates to work across a range of established art forms and contribute to the promotion and development of the arts and arts education in the local, regional and international cultural and creative industries.



PROGRAMME FEATURES

Students will be able to

- integrate subject knowledge, professional knowledge and practical abilities in Education Major and Discipline Major;
- participate in school field experience to further enhance academic knowledge, professional skills and practical approaches;
- have first-hand exposure to the operations of an organisation and reflect on the practices in the real working environment in the work-based internship experience;
- take part in the student exchange programmes and study tours to broaden their international horizon; and
- obtain a double degree upon completion of all graduation requirements.

PROGRAMME STRUCTURE

A comprehensive professional co-terminal double degree programme which comprises 156 credit points (cps) over 5 years. The programme curriculum covers the following domains:

Domain	Credit Points
Major	75
• Discipline Major (Creative Arts and Culture Studies)	30
• Education Major (Music / Visual Arts Studies)	33
• Interdisciplinary Course / Cross-Faculty Core Course	6
• Internship	6
Education Studies	30
Field Experience	20
Final Year Project (Honours Project / Capstone Project)	6
General Education	16
Language Enhancement	9
Total	156



CAREER PROSPECTS

Graduates of the programme

- will possess a Qualified Teacher Status in Hong Kong with in-depth academic and professional knowledge;
- will be qualified for teaching career opportunities in primary or secondary schools in Hong Kong*;
- will obtain the ability to work competently in a broad range of positions such as curators for art museums and galleries, administrators of arts-and-cultural related organisations, researchers in cultural studies, musicians/designers and arts educators; and
- can pursue local and overseas higher degree level programmes in education and creative arts disciplines.

* The programme is designed to provide students with the disciplinary and professional competency to teach in both primary and secondary schools. Students are normally assigned a focus of study (i.e. primary or secondary level) by the end of their first year of study. Recognition of qualified teacher status in a primary or secondary school in Hong Kong is subject to the decision of the Education Bureau (EDB).



ENTRANCE REQUIREMENTS

General Entrance Requirements for students with HKDSE qualifications:

4 core subjects and 2 elective subjects with

- Level 3 or above in English Language and Chinese Language;
- Level 2 or above in Mathematics (Compulsory Part) and 2 elective subjects; and
- Attained in Citizenship and Social Development

Programme Entrance Requirements:

- Satisfactory performance in a practical test / an audition[#] and a portfolio interview, in addition to the General Entrance Requirements

[#]Applicants who do not take HKDSE Music/Visual Arts; or obtain Level 3 or below in HKDSE will need to attend the practical test / participate in the audition. Applicants who obtain Level 4 or above will be exempted from the test/audition.

Admission Enquiries

(852) 2948 6886

admission@eduhk.hk

www.apply.eduhk.hk/ug



Every effort has been made to ensure that information contained in this leaflet is correct. Changes to any aspects of the programmes may be made from time to time due to unforeseeable circumstances beyond our control and the University reserves the right to make amendments to any information contained in this leaflet without prior notice. The University accepts no liability for any loss or damage arising from any use or misuse of or reliance on any information contained in this leaflet.

Any aspect of the course and course offerings (including, without limitation, the content of the course and the manner in which the course is taught) may be subject to change at any time at the sole discretion of the University. Without limiting the right of the University to amend the course and its course offerings, it is envisaged that changes may be required due to factors such as staffing, enrolment levels, logistical arrangements, curriculum changes, and other factors caused by unforeseeable circumstances. Tuition fees, once paid, are non-refundable.

Students admitted into this programme starting from the 2023/24 cohort are required to visit the Greater Bay Area (GBA) and/or other parts of Mainland China. Programme may also require students to participate in other non-local learning experience for completion of the programme. While the visits are heavily subsidised, students are still required to contribute part of the estimated cost of the visits ("student contribution"), whereas personal entertainment, meals expenses, travel document fee and personal insurance costs will not be supported. The estimated cost of the visits for students admitted to the 2024/25 cohort is not available yet as it is subject to a variety of factors such as changes to the cost of the visits as a result of inflation, trip duration, traveling expenses, the exchange rate, etc. The exact amount of student contribution is thus not available.